

## **Printing 4x6 size using 6x8 media**

When the printer is using 6x8 size media, 2 image layout is possible.

With the printer driver paper setting, multi-image layout is made possible, and the image sizes are as follows.

Layout designation

Driver paper setting (layout)	Paper Orientation	Image size width x height (mm)	Using media
(6x4) x 2	Portrait	(156.1x105.0) x 2	6x8
	Landscape	(105.0x156.1) x 2	
PR(4x6) x 2	Portrait	(105.0x156.1) x 2	6x8
	Landscape	(156.1x105.0) x 2	
Image layout median size		2.54	

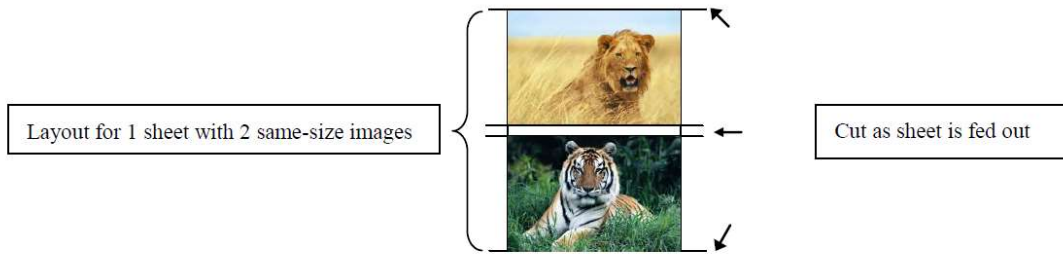
Multiple layout is possible under the following conditions.

1. The printer is using 6x8 size media.
2. The printer driver paper size is set to one of the above sizes.
3. Multiple images are sent from the application.

Note) because the multi-image layout occurs on a per job basis, this works when there are multiple images for 1 job. If you want to print the same image, be sure to send the image data for each copy to be printed. The printer prints 2 images in one operation, and the paper is cut as it is fed out.

### **<Multi-image layout patterns>**

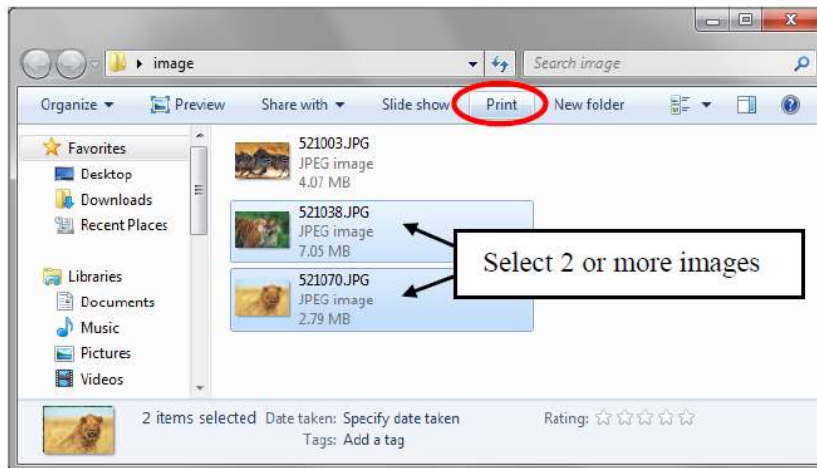
The following is possible for the multi-image layout pattern.



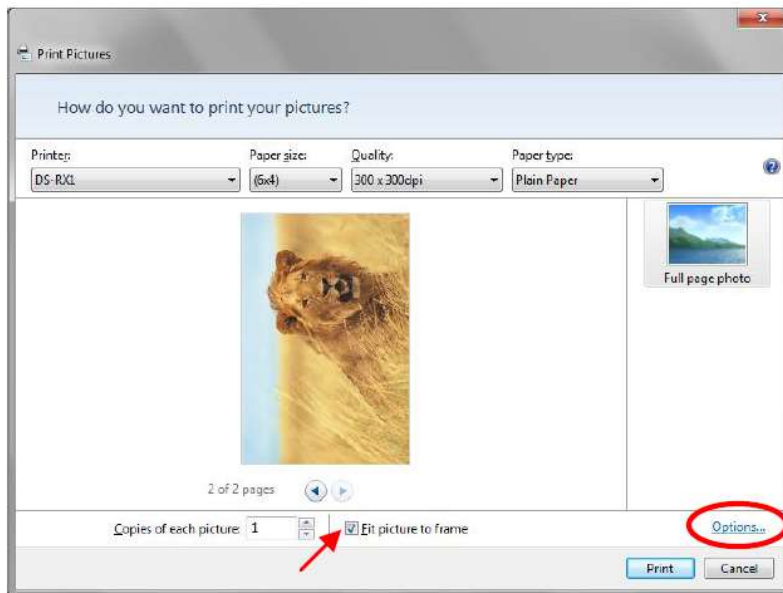
### **<Example of Application Use>**

This is an example using Windows Explorer

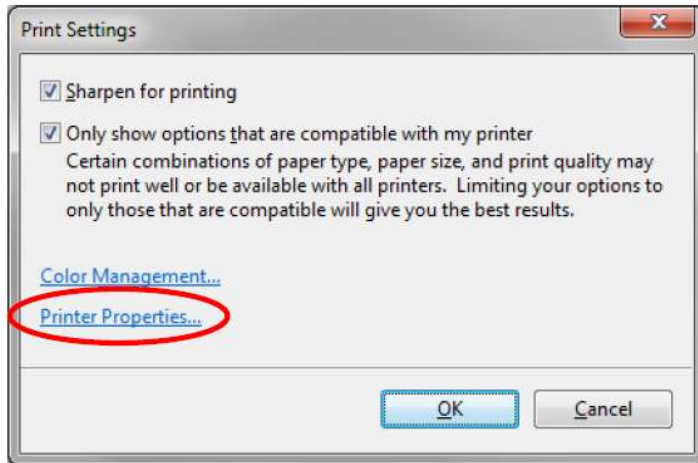
Step 1. Select 2 or more images=>Click "Print".



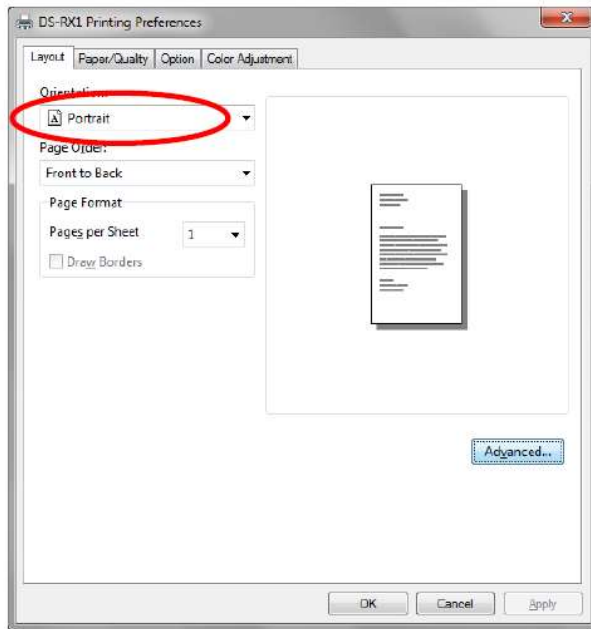
Step 2. Check "Fit picture to frame" and click "Options".



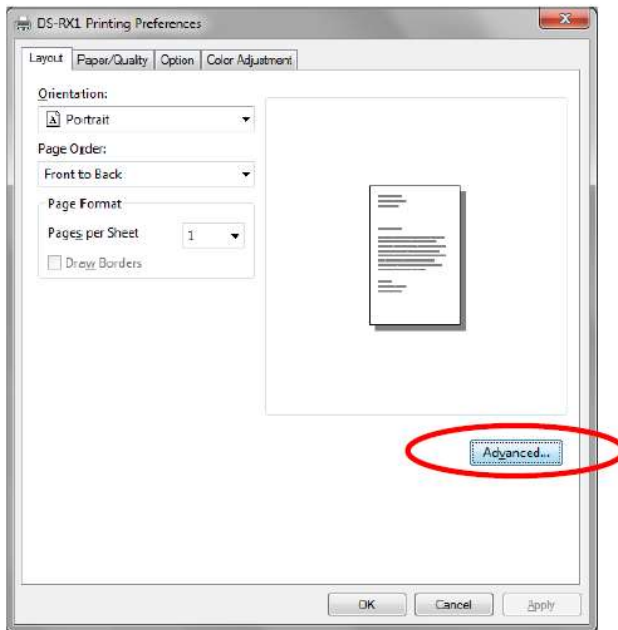
Step 3. Click on “Printer Properties”.



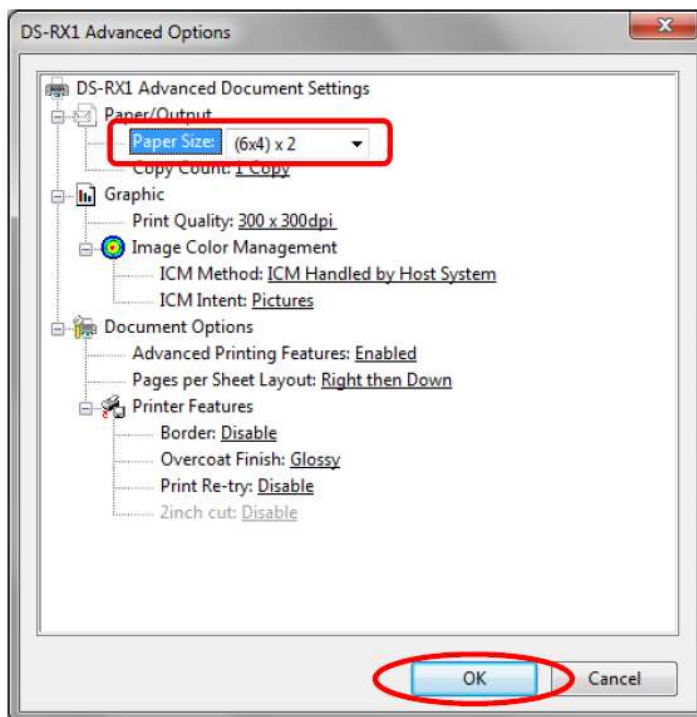
Step 4. From the “Orientation” pull-down menu, select “Portrait”.



Step 5. Click on “Advanced”.



Step 6. Set the Paper Size to “(6x4)x2”. Then click “OK” on the windows from steps 6=>5, returning to the window displayed in Step 2.



Step 7. Click on “Print”.

